



# WECAN News

## **An Update for Members and Friends January 2010**

### **In this issue**

[Upcoming Conferences](#)

[Waldorf Early Childhood Education in Zhuhai, China](#)

[The Child in the Care of the Authentic Adult](#)

[News from WECAN Books](#)

[From the International Association](#)

[From the Regions](#)

[Calendar of Events](#)

**Dear Members and Friends,**

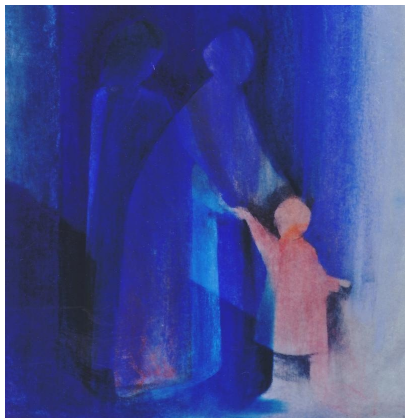
Greetings! In this new year, we are sending you our winter News Update in a new electronic format. We hope that you will find it a helpful resource in your work!

Please share it with others in your school community who might be interested. We would also be especially grateful if you would be willing to share the [annual appeal from the International Association](#) (IASWECE) with the parents in your community, either electronically or by making paper copies.

Let us know what you think of this new format! Our [contact information](#) is listed at the bottom of this Update.

With warm wishes,  
*Susan Howard*  
WECAN Coordinator

## **Upcoming Conferences: Online Registration Now Open**



### **Deepening Our Capacities to Meet the Children in Our Care**

February 12-14, Spring Valley, New York  
with Dr. Gerald Karnow, MD  
Fellowship Community Physician  
and the Rudolf Steiner Fellowship Foundation

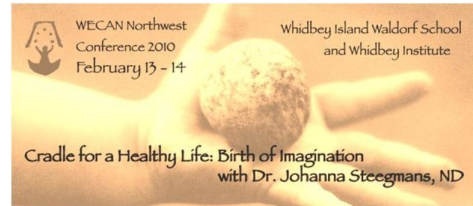
This year's conference is the third in a series of three where we have focused on working with the so-called difficult children in our care. The conference will offer a variety of formats for working with this theme, including a panel discussion and a wide variety of workshops.

Start your registration process now at [www.waldorfearlychildhood.org](http://www.waldorfearlychildhood.org).

\*\*\*\*\*

## **Cradle of a Healthy Life: Birth of Imagination**

February 13-14, Whidbey Island, Washington  
with Dr. Johanna Steegmans, ND



In the second of a three-year cycle, Doctor Johanna Steegmans, out of her understanding of child development, will lead us in an exploration of the growing child as a developing human being. This conference will offer us an opportunity to review and renew our understanding of the true nature of imitation, its manifestation in imaginative play, its effect on the developing senses and its nurturance of the social capacities of the adult human being. In addition, a diverse choice of workshops covering all aspects of early childhood will be offered.

Register at [www.whywaldorfworks.org/northwest](http://www.whywaldorfworks.org/northwest).

For more information contact: Karen Humber - [karen@roundtablesolutions.ca](mailto:karen@roundtablesolutions.ca)

The AWSNA Pedagogical Conference **Imagination as a Tool for Healing** with Dennis Klocek follows, from February 14-17, and online registration is accessed through the same [link](#).

## **Waldorf Early Childhood Education in Zhuhai, China**

Connie White



Zhuhai is a small city in tropical S.E. China with many large green hills and miles of coastline. Because it is so beautiful, it has been designated a tourist area and is therefore spared the polluted air that rapid industrialization has brought upon many cities in China. Since neighboring Macau and nearby Hong Kong returned to China in the late nineties, this one-time fishing village has quickly increased in population to one million.

It was in this city that I spent ten wonderful weeks visiting two Waldorf kindergartens, (Sunny Yard and Love Kindergarten). Both kindergartens are centrally located in houses with outdoor play yards--a rarity in the city where most families live in apartments. Sunny Yard is nestled in a lovely gated village of houses built 15 years ago for government officials. Love Kindergarten is housed in an old villa with a yard of fruit trees and gardens. Both kindergartens accommodate 14 to 16 children between the ages of two-and-a-half and seven years. Both kindergartens have strong programs and both kindergartens have waiting lists. There is also a small home-based Grade One/Two class of five children in the city. The Waldorf teachers in Zhuhai share a dream that one day all three groups will combine to form a full Waldorf School.

[CLICK HERE FOR THE FULL ARTICLE](#)

## **The Child in the Care of the Authentic Adult**

Anne-Marie Fryer



Children are precious and rely totally on the care of the adults in charge of them. The responsibilities of raising children are tremendous and never finished. Parents have both the most enjoyable and the most demanding job. As teachers and care providers of children, we may ask ourselves the question, how can we even think of taking on this daunting task of caring for other people's children?

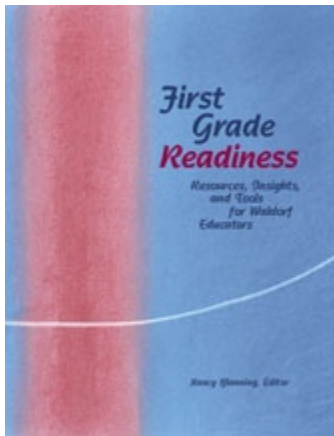
Helle Heckmann, director of the child care center Nøkken in Copenhagen, Denmark, says, "As a Waldorf kindergarten teacher I am not trying to replace parents, but I want to create a stable and caring environment in which the children can meet an authentic adult who takes life seriously. I want to create a framework that reflects my insights about the children's needs, and within which the children can safely and comfortably unfold and develop." She continues, "I say 'Yes' to care for other people's children because I say 'Yes' to life and because I consider it the most important and meaningful job in the world to protect childhood. Once we leave childhood we can never have it back!"

We were fortunate that Helle Heckmann came to Pleasant Ridge Waldorf School in Viroqua, WI on October 23-25, 2009 to conduct a conference, "The Child in the Care of the Authentic Adult." The conference explored the characteristics and qualities that distinguish the very young child from the older child. What is it that makes a three-year-old, for example, unique from a six-year-old, and how do these differences affect an early childhood setting, either at home or in kindergarten, where children of various ages are present?

[CLICK HERE FOR THE FULL ARTICLE](#)

## News from WECAN Books

---

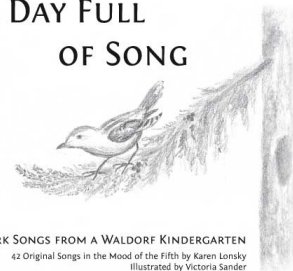


Two books have grown out of the work of the WECAN Working Group on the Older Child in the Kindergarten. *You're Not the Boss of Me! - Understanding the Six/Seven-Year-Old Transformation*, edited by Ruth Ker, was created as a comprehensive resource for all teachers, parents, and therapists who work with children at that wonderful and challenging age. However, we could not fit in all the material we wanted to! The specific questions surrounding the determination of school readiness demanded their own volume, which we were delighted to be able to publish in 2009.

*First Grade Readiness: Resources, Insights, and Tools for Waldorf Educators* was conceived as a companion book to specifically address these challenging issues. Editor Nancy Blanning has collected a wealth of previously-published and new material, which gives a picture of the nature and needs of the child between six and seven, describes concrete methods of observation and assessment that can (and should) be adapted for each individual situation, addresses the importance of working with parents in school-readiness decisions, and much more. This is an essential resource for all schools, and all teachers and therapists who work with school-readiness assessment.

Just off the presses is *A Day Full of Song* by Karen Lonsky. This little book, spiral-bound with one song on each page for ease of use, offers 42 original songs in the mood of the fifth created for many activities of the kindergarten day. From grinding grain and raking leaves, to washing hands and cleaning, to story time and birthday celebrations, it traces a joyful path through the day. The songs are beautifully hand-notated and lettered and have charming illustrations at the beginning of each section. A companion CD is also available as a learning aid, with vocal and instrumental versions of all the songs.

### A DAY FULL OF SONG



WORK SONGS FROM A WALDORF KINDERGARTEN  
42 Original Songs in the Mood of the Fifth by Karen Lonsky  
Illustrated by Victoria Sander

Coming next is our first-ever Spanish-language publication, *El Desarrollo del Niño y la Educación Preescolar Waldorf* (The Development of the Child and Waldorf Early Childhood Education), edited by Louise deForest. Louise selected and translated six essential, fundamental articles for Waldorf early childhood educators by Joan Almon, Joop van Dam, Helmut von Kügelgen, Susan Howard,

Roberto Trostli, and Freya Jaffke. We hope this little volume will become a valuable resource for our colleagues in Mexico, who do not yet have an equivalent of the English-language *Gateways* newsletter, and for educators in other Spanish-speaking countries.

For a complete catalog and order form, contact Melissa Lyons, [mlyons@waldorfearlychildhood.org](mailto:mlyons@waldorfearlychildhood.org).

[Online orders](#) on our website are fulfilled through Bob and Nancy's Bookshop. (Note that the newest books, *A Day Full of Song* and *El Desarrollo del Niño y la Educación Preescolar Waldorf*, are not yet available online.)

## From the International Association

---



The International Association for Steiner/Waldorf Early Childhood Education (IASWECE) is planning a conference in Sao Paulo, Brazil, from July 4 - 8, 2010. The theme is the development of outer movement in the child and the development of inner movement and flexibility in the educator, including imaginative activity stimulated through the archetypal pictures in the fairy tales as well as the meditative life of the teacher. Keynote speakers will include Louise deForest from New York, Helle Heckmann from Denmark, and Nancy Mellon from New Hampshire. There will be a variety of workshops, opportunities to visit social outreach projects in the area, and to participate in a two-day pre-conference meeting for the public, sponsored by the Brazilian Alliance for Childhood, with guests Christopher Clouder and Joan Almon.

Further information will appear soon on the website of the International Association at [www.iaswece.org](http://www.iaswece.org) or you can contact Chantal Amarante at [chantal@fewb.org.br](mailto:chantal@fewb.org.br).

We are sending you a link to the annual [International Association appeal letter](#). This year the appeal is addressed to parents whose children attend Waldorf early childhood programs worldwide -- we would be very grateful if you would make color copies to distribute to the parents in your program, to help them gain a sense that the education and care their child receives are part of a world movement. Donations to the IASWECE may be sent to WECAN.

Gifts are much needed and will support the development of Waldorf early childhood training programs and mentoring in Bulgaria, Estonia, the Czech Republic, Hungary, Lithuania, Poland, Romania, Russia, Ukraine, Armenia, India, China, Vietnam, Kyrgyzstan, Ethiopia, Kenya, and South Africa. If you are interested in forming an ongoing partnership with a kindergarten in one of these countries, please contact the International Association at [info@iaswece.org](mailto:info@iaswece.org) or visit the website at [www.iaswece.org](http://www.iaswece.org).

## From the Regions

---

For reports by our WECAN representatives on recent regional gatherings, conferences, and activities, click [here](#).

## Calendar of Events

---

Jan. 16 - 17, Vancouver, BC, Canada: **The Art and Delight of the Rod Puppet**. Contact Suzanne Down, [suzanne@junipertreepuppets.com](mailto:suzanne@junipertreepuppets.com)

January 23, Sophia's Hearth Family Center, Keene, NH: **The Pikler Approach to Gross Motor Development** with Jane Swain. Contact Bonnie Chamberlin, 603 357-3755,

[bonnie@sophiashearth.org](mailto:bonnie@sophiashearth.org)

January 30, Rudolf Steiner College, Fair Oaks, CA: **Eat Your Veggies! Nutrition for Young Children:** Educator's Enrichment Series Session III. Contact 916- 961-8727 ext. 117, [earlychildhood@steinercollege.edu](mailto:earlychildhood@steinercollege.edu)

January 30, Rudolf Steiner College, Fair Oaks, CA: **Discipline through Pictorial Language** with Veronica Gunesevara. Family Ways Parenting Series. Contact 916-961-8727 x117, [earlychildhood@steinercollege.edu](mailto:earlychildhood@steinercollege.edu)

February 13, Sacramento, CA: **The Archetype of the Worker Character**, puppetry workshop with Suzanne Down. Contact [suzanne@junipertreepuppets.com](mailto:suzanne@junipertreepuppets.com)

February 14 - 17, Rudolf Steiner College, Fair Oaks, CA: **Western Waldorf Educator's Conference** including an Early Childhood mini-conference with Nancy Blanning, Laurie Clark and puppetry with Suzanne Down. In addition several workshops will be offered on early childhood issues. Contact [conferenceregistration@steinercollege.edu](mailto:conferenceregistration@steinercollege.edu) or 916-864-4864.

February 18 - 20, Marin Waldorf School, San Rafael, CA: **A New Impulse**, conference with Christof Wiechert for Waldorf professionals and those with or in training. Contact Dave Alsop, Bay Area Center for Waldorf Teacher Training, 415-332-2133, [dave@bacwtt.org](mailto:dave@bacwtt.org).

February 20, Sophia's Hearth Family Center, Keene, NH: **Creative Discipline, Part II - Reframing Discipline Using Sensory Strategies** with Jane Swain. Contact 603-357-3755, [bonnie@sophiashearth.org](mailto:bonnie@sophiashearth.org)

February 26 - March 5, Rudolf Steiner College, Fair Oaks, CA: **LifeWays Training** with Cynthia Aldinger and Rudolf Steiner College colleagues. First of three sessions of new LifeWays Training. Contact Rudolf Steiner College, 916-961-8727, [info@steinercollege.edu](mailto:info@steinercollege.edu)

March 5-7, Milwaukee, WI: **Nurturing Resilience: The Power of Storytelling to Build Healthier Bodies and Communities**, conference with Nancy Mellon. Contact Lori Barian, [lori.barian@newspiritventures.com](mailto:lori.barian@newspiritventures.com), 262-642-9672.

March 6, Marin Waldorf School, CA: **The First Three Weeks: an Exploration of Saturn, Sun and Moon Stages through Embryology**, workshop with Dennis Klocek. Contact Melinda Richard at MWS 415-479-8190 ext. 144.

## Quick Links

---

- [WECAN Website](#)
- [WECAN Books](#)
- [WECAN Membership](#)
- [Directory of Waldorf Early Childhood Programs](#)
- [International Association for Steiner/Waldorf Early Childhood Education \(IASWECE\)](#)

## Contact Information

---

### WECAN Administrative Office

Melissa Lyons, tel 845-352-1690, fax 845-352-1695, [info@waldorfearlychildhood.org](mailto:info@waldorfearlychildhood.org)

### WECAN Coordinator

Susan Howard, tel 413-549-5930, [showard@waldorfearlychildhood.org](mailto:showard@waldorfearlychildhood.org)

### WECAN Membership Coordinator

Andrea Gambardella, tel. 845-517-2388, ext. 17, [agambardella@waldorfearlychildhood.org](mailto:agambardella@waldorfearlychildhood.org).

**WECAN Membership Administrator**

Susan Wallendorf, tel. 845-517-2388, ext. 11, [membership@waldorfearlychildhood.org](mailto:membership@waldorfearlychildhood.org).

**Calendar of Events**

Lory Widmer, tel. 845-426-3746, [publications@waldorfearlychildhood.org](mailto:publications@waldorfearlychildhood.org)

**IASWECE Office, Stockholm, Sweden**

[info@iaswece.org](mailto:info@iaswece.org)

[Join Our Mailing List!](#)